



Columbia Wind

Hampden Township Presentation
May 2026

Agenda

01 **About Us**

02 **Project Background**

03 **Project Timeline**

04 **Common Questions**

05 **Conclude**

About us

Serving customers with
safe, reliable and resilient
energy

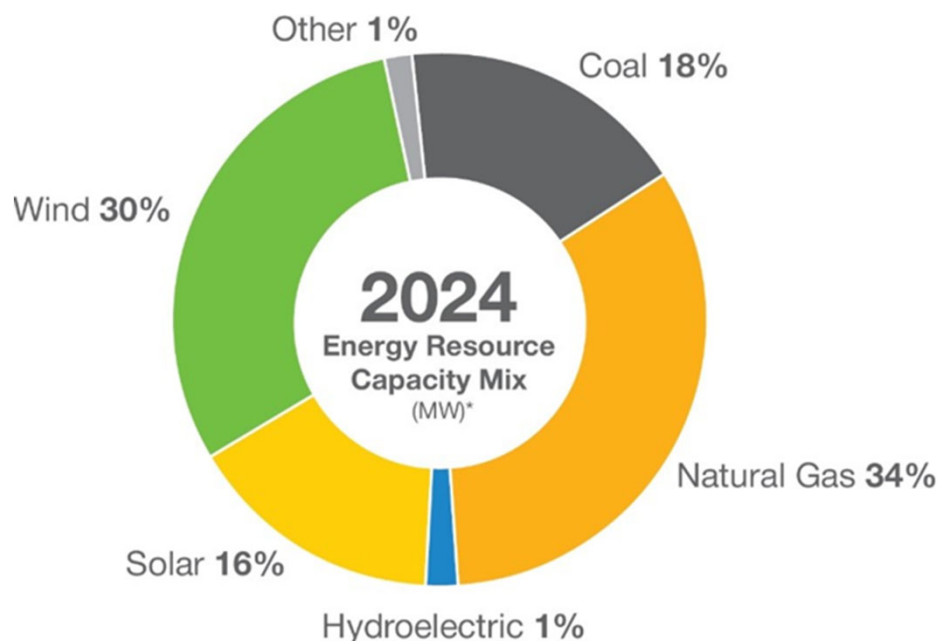
440 communities served

500,000 electric customers

200,000 natural gas customers

1,300+ employees

Balanced energy mix



*% based on MWs

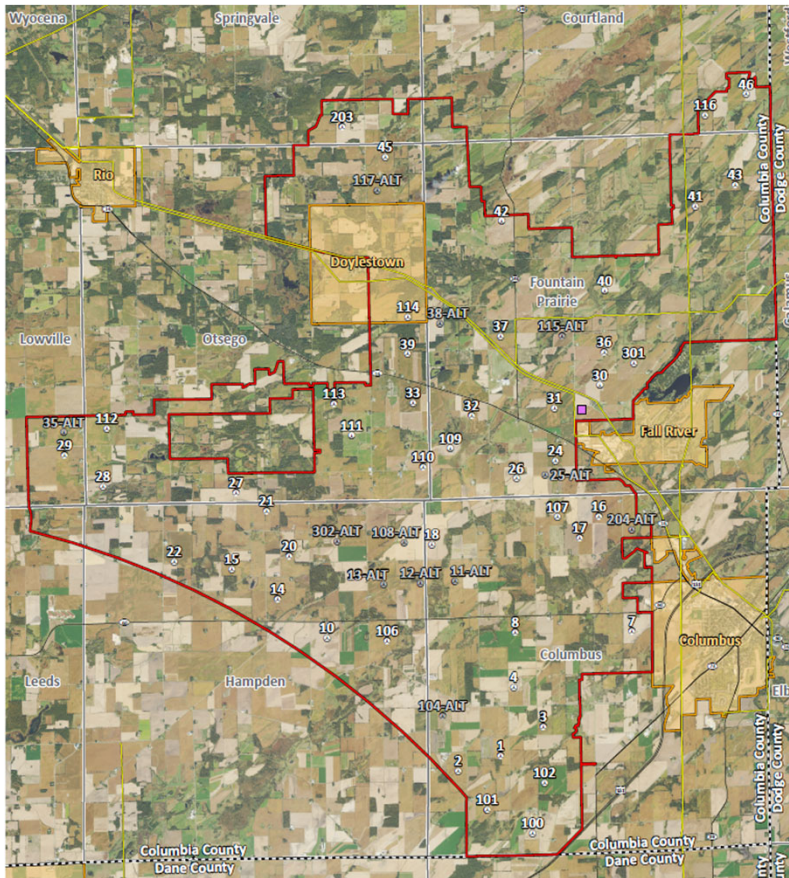


Why Columbia County?

- Long-term landowner relationships
- Established, successful community relationships/partnerships
- Wind fits well with ag
- Strong wind resources
- Cost-effective grid connection



Columbia Wind Project Overview



Thoughtful siting to minimize disturbance

- Less than 2 acres per turbine
- ~98% of land in project boundary undisturbed by construction
- Continuing to engage with landowners and to refine construction planning and minimize disturbance

Project goals

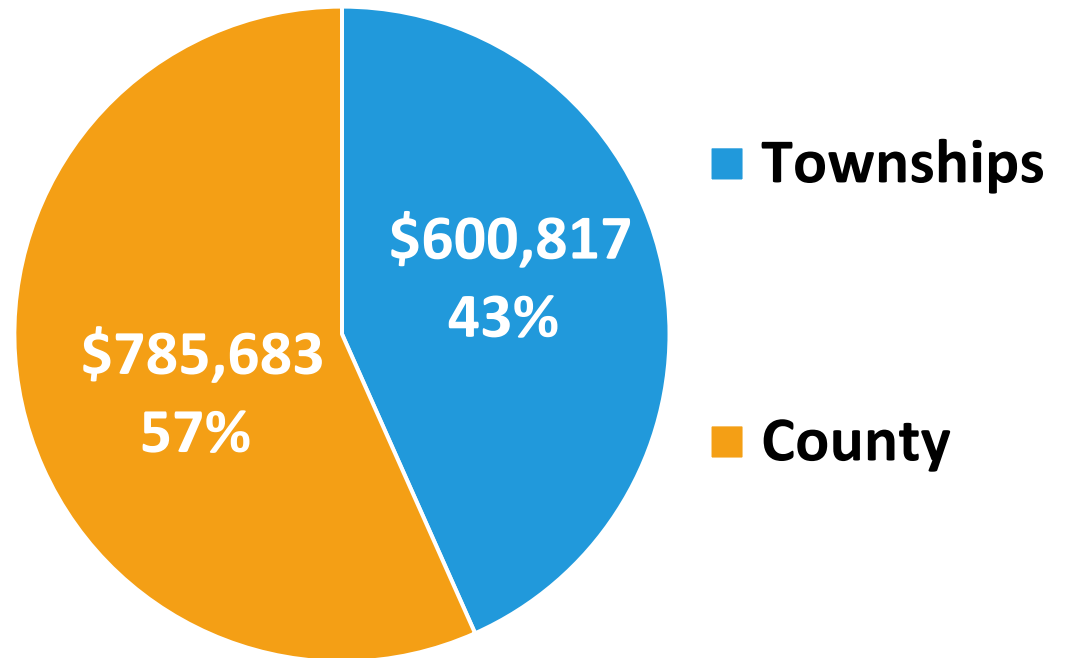
- 47 turbines
- 277 megawatts
- Energy equivalent of up to 100k homes



Columbia Wind Community Benefits

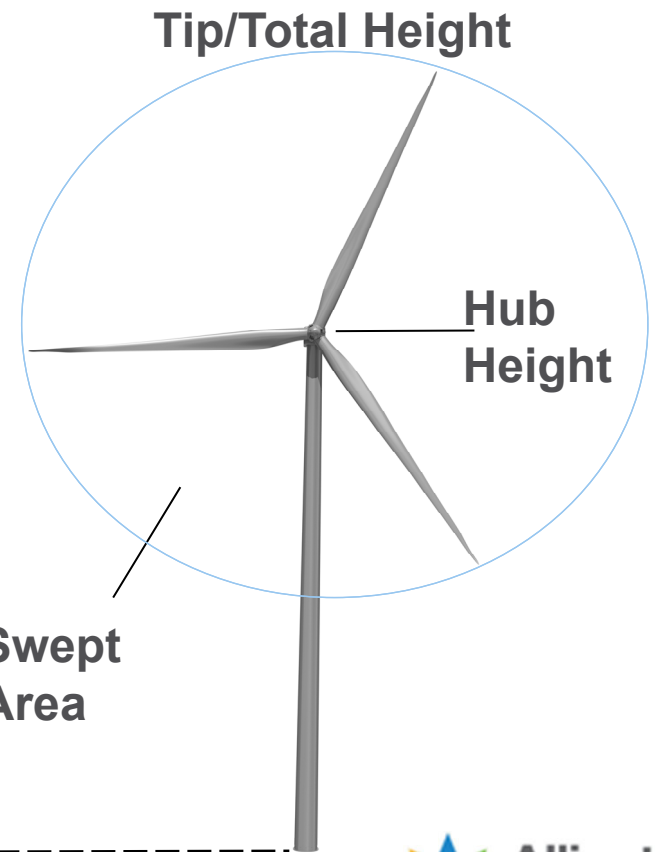
Annual Shared Revenue

- New tax revenue
- Landowner payments
- Jobs
- Commitment to community



Turbine Technology

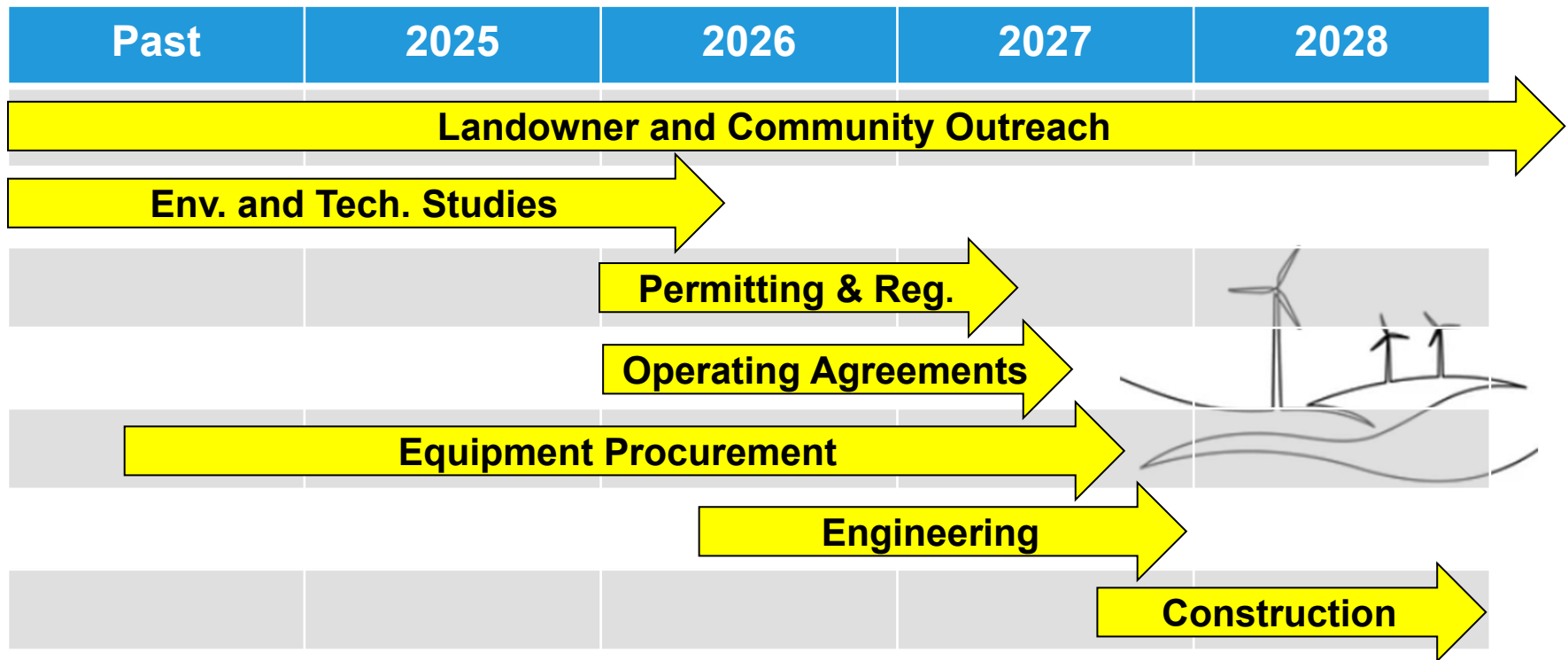
Category	Nordex Machine
Tip Height (ft)	677.5
Hub Height (ft)	410
Blade Length (ft)	261.6
Swept Area (sq ft)	225,000
Megawatts	5.9
Homes Powered	2,130



>1,400 feet



Projected Timeline



COMMON QUESTIONS



Sound and Shadow

Sound

- **Code***: “wind energy system does not exceed 50 dBA during daytime hours and 45 dBA during nighttime hours.” Plus, post-monitoring and complaint process.
- **Our commitment**: 45 dBA or less at all times

Shadow

- **Code***: no more than 30 hours...mitigation down to 20 hours
- **Our commitment**: With technology (i.e.- shadow module), limit shadow to 20 hours by curtailment alone



Serrated trailing edges

*Code generalized for brevity and context

Notices and Outreach

- **Code***: 90 days before filing an application and within 1 mile of a wind turbine
- **Our Commitment:**
 - Letter notifications within 1 mile of the project boundary. *Regularly updating the distribution mail list* as we learn of mis-receipt or changes of address. Email notifications as well. Please share any updates you may have!
 - On-going outreach includes updated website with project information and contact information, local office, public events, and engagement with local and regional organizations

*Code generalized for brevity and context



Decommissioning / End of Project-life

- We are following the state process
- **Our Commitment:**
Restoration standards plus goal of full recyclability of wind turbines and equipment, including blades



Environmental

- We are following the state process
- Our commitment:
 - 1) Using a variety of means and methods, we will avoid, minimize, and monitor (before and after construction)
 - 2) Consult with State and Federal agencies to achieve balanced outcomes and pursue a project we can be proud of with respect to the environment

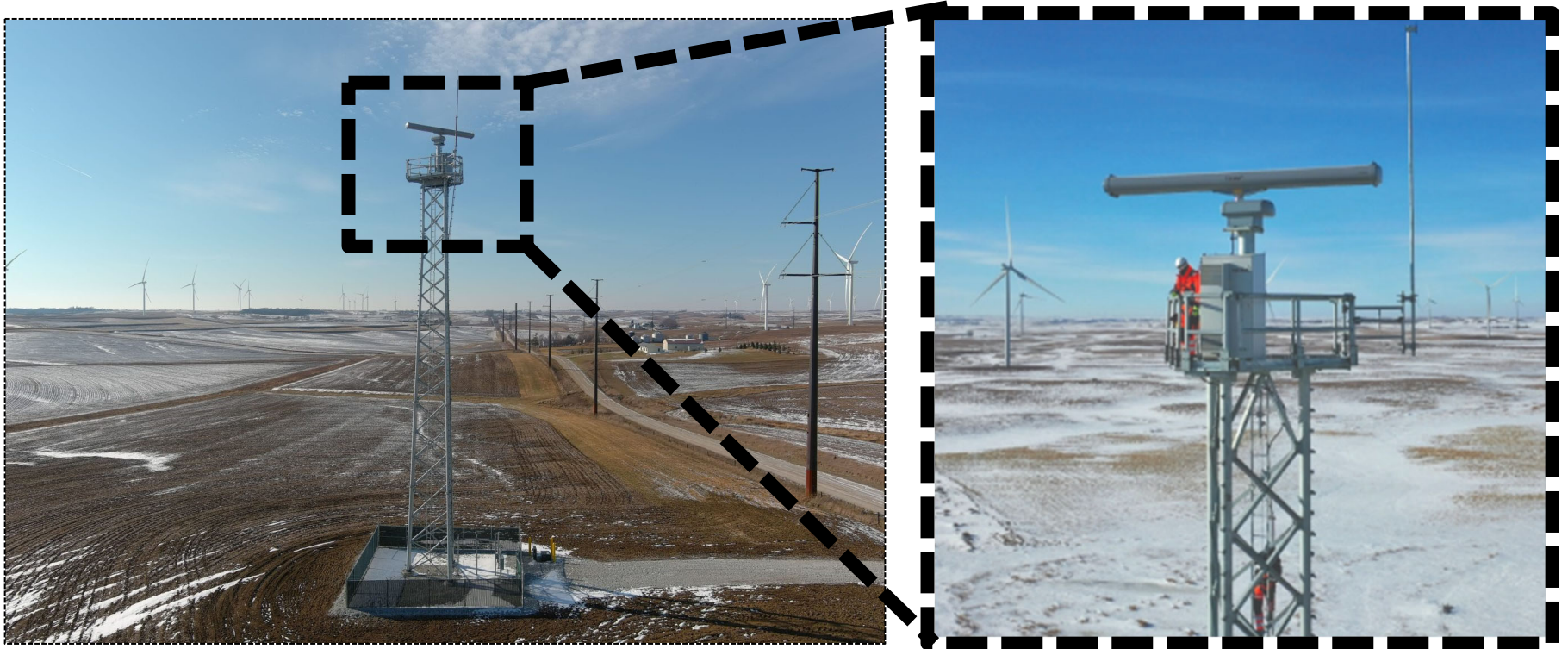
Development* Studies

- ✓ Critical Issues Analysis
- ✓ Eagle Surveys
- ✓ Small Bird/Avian Use Surveys
- ✓ Endangered and Threatened Species
- ✓ Bat Surveys
- ✓ Wetland Surveys
- ✓ Cultural and Historic Resources
- ✓ Geotech/Soil Surveys

*Relevant to development of a project, other studies follow for construction and final stages of design

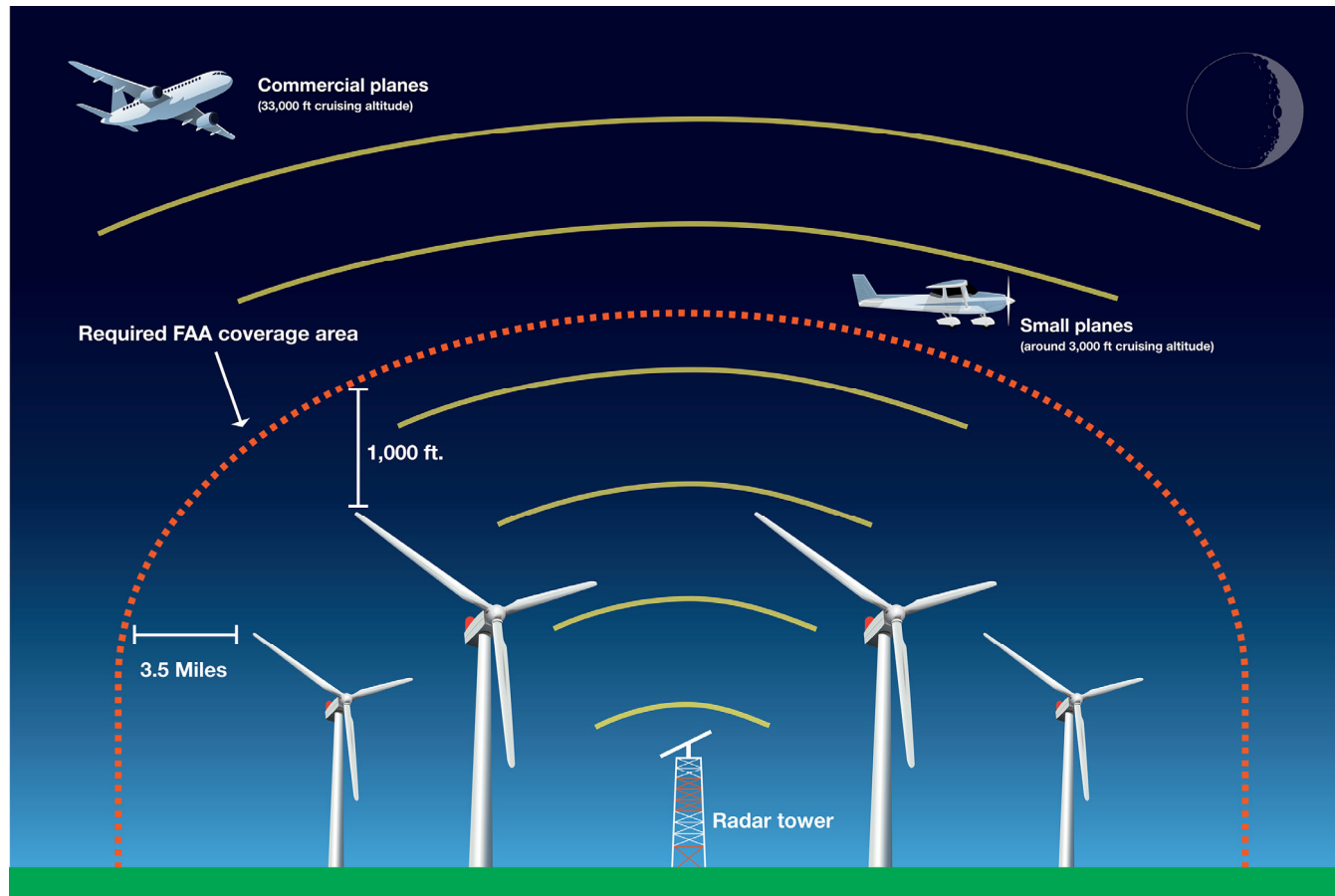
Aircraft Detection Lighting System (ADLS)

What is it?



Aircraft Detection Lighting System (ADLS)

How does it work?



Contact Us



Open office hours

- Wednesday mornings at our local office
- 125 East James Street, Columbus



Project Phone#

- (608) 716-9823



Email

- CommunityAffairs@alliantenergy.com



Website

- www.alliantenergy.com/ColumbiaWind

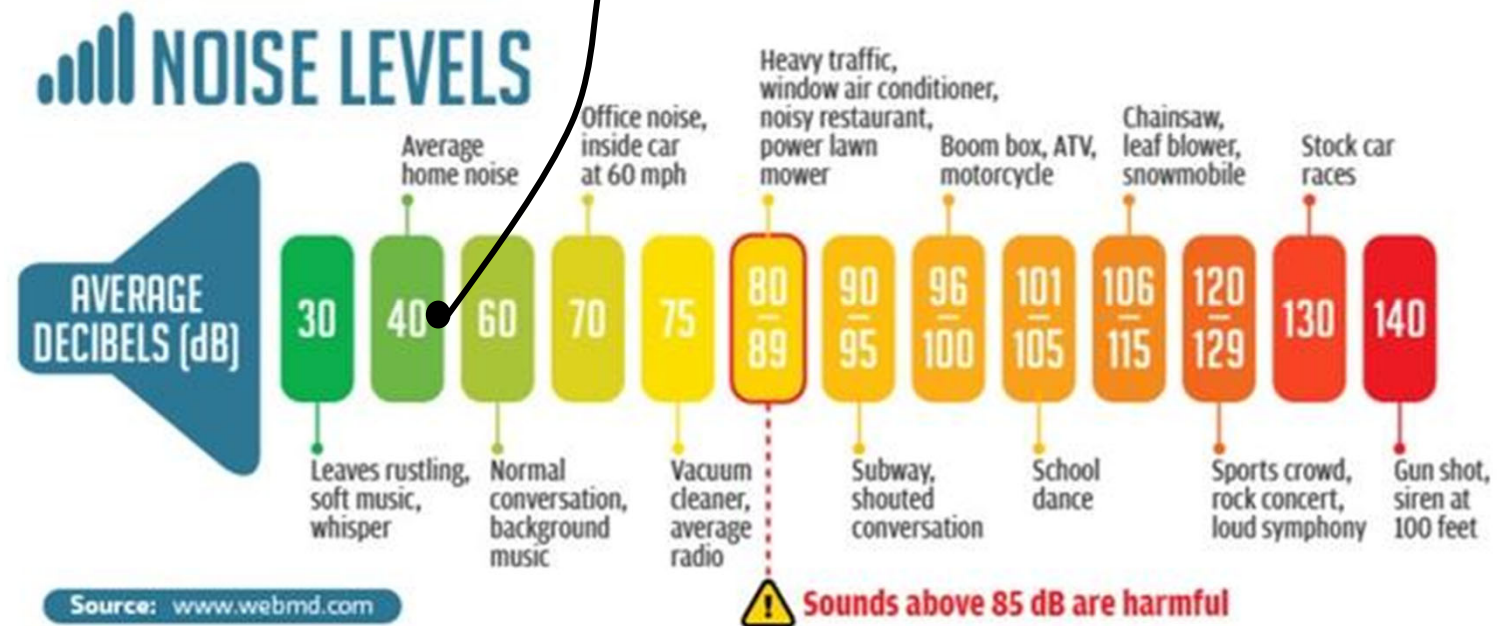


THANK YOU



Sound (visual aid)

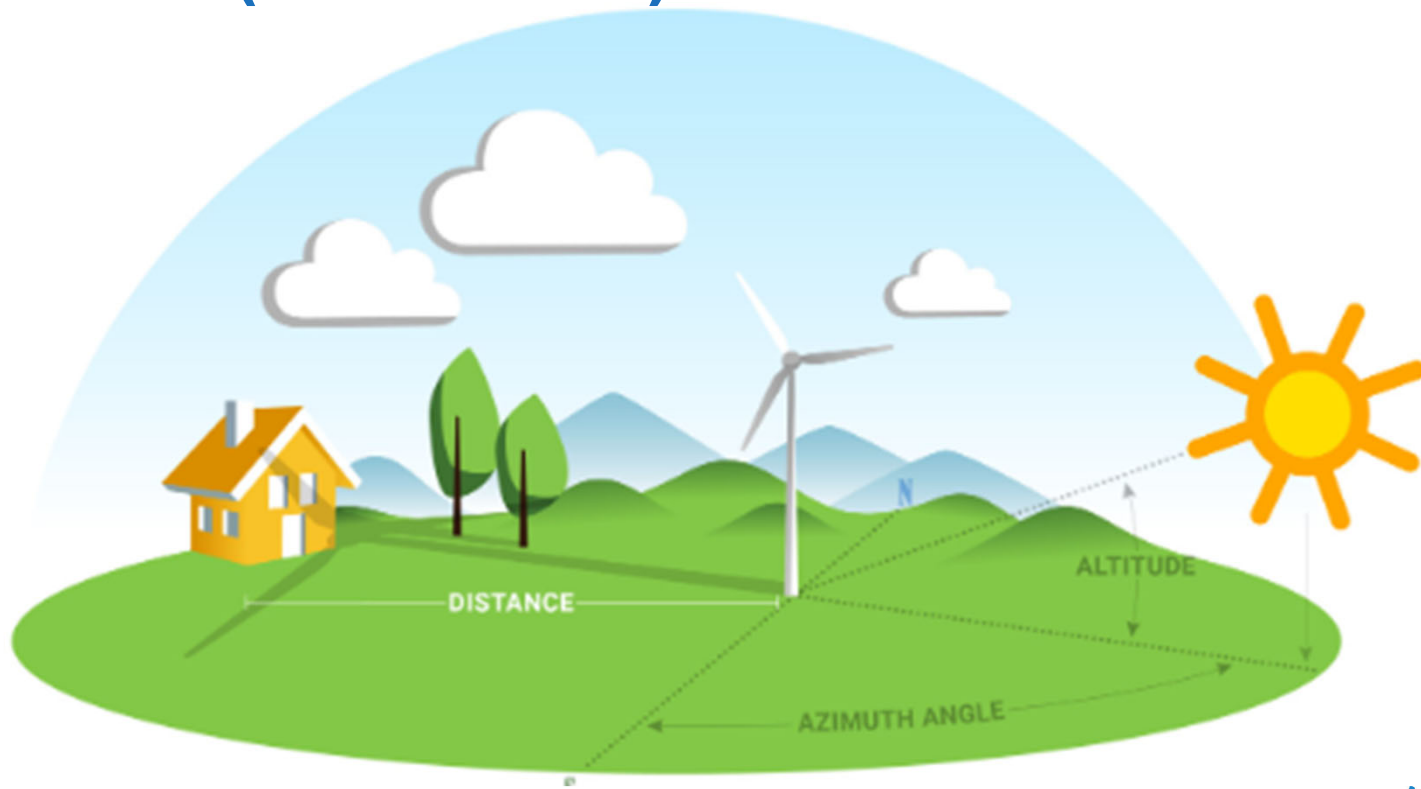
Columbia Wind



“...measurements shall be made as near as possible to the outside wall nearest to the closest wind turbine...” -PSC128



Shadow (visual aid)



Environmental (visual aid)

